

Canyon Cultivation Cannabis Edibles Analysis

Cannabinoid Potency Laboratory Report

Analysis Date: September 20, 2014

Analyzed By: James Kim

1. SCOPE

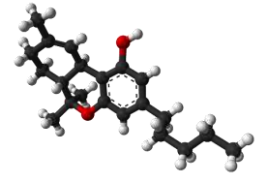
The content of Cannabidiolic acid (CBDA), Cannabidiol (CBD), Tetrahydrocannabinolic acid (THCA), Cannabinol (CBN), and Δ9-Tetrahydrocannabinol (Δ9-THC) in Canyon Cultivation edibles was determined by solvent extraction followed by High Performance Liquid Chromatography with Diode Array Detection.

2. SUMMARY OF RESULTS

Product	MITS Code	Total Milligrams Cannabinoids				
		CBDA	CBD	THCA	CBN	Δ9-THC
Suck it - Grapefruit	0002185	0.00	0.00	0.00	2.03	69.01
		Homogeneity %RSD = 0.78 PASS				
Suck it – Citrus Medley	0002186	0.00	0.00	0.00	3.59	68.88
		Homogeneity %RSD = 0.47 PASS				
Suck it – L’Orange	0002187	0.00	1.64	0.00	2.25	80.39
		Homogeneity %RSD = 0.25 PASS				
Suck it - Peppermint	0002188	0.00	4.24	0.00	1.82	70.90
		Homogeneity %RSD = 0.40 PASS				
Suck it - Strawberry	0002190	0.00	5.69	0.00	1.88	76.47
		Homogeneity %RSD = 2.42 PASS				



Canyon Cultivation
 Manifest 0000171232
 Analysis Results



Product	MITS Code	Milligrams Cannabinoids				
		CBDA	CBD	THCA	CBN	Δ9-THC
Sucker – Pina Colada	0002191	0.00	1.53	0.00	0.00	60.41
		Homogeneity %RSD = 0.70 PASS				
Sucker - Strawberry	0002192	0.00	1.67	0.00	0.00	59.32
		Homogeneity %RSD = 1.06 PASS				
Suck it - Cinnamon	0002193	0.00	5.34	0.00	1.59	72.58
		Homogeneity %RSD = 1.10 PASS				